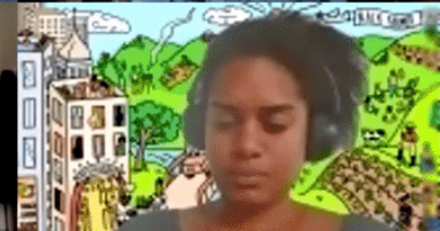
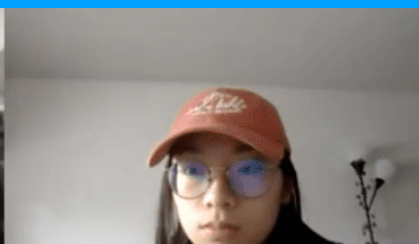
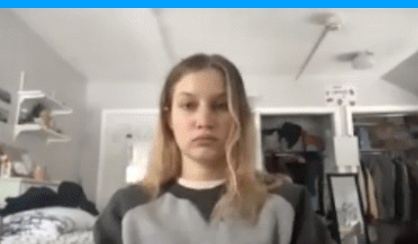


StudioLab





Black Belt Citizens Fighting for Health and Justice



Cornell Center of Death Penalty Worldwide

Community Partners



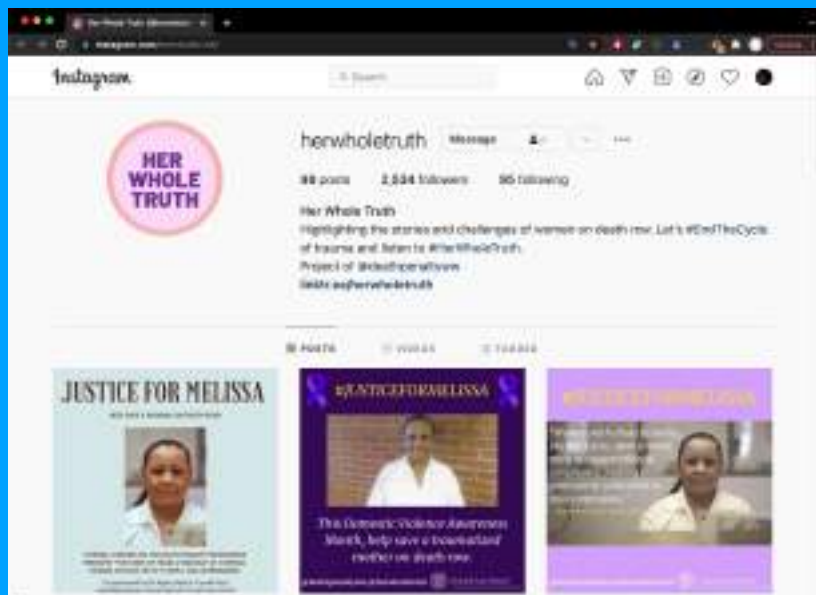
Health Access Connect, Uganda



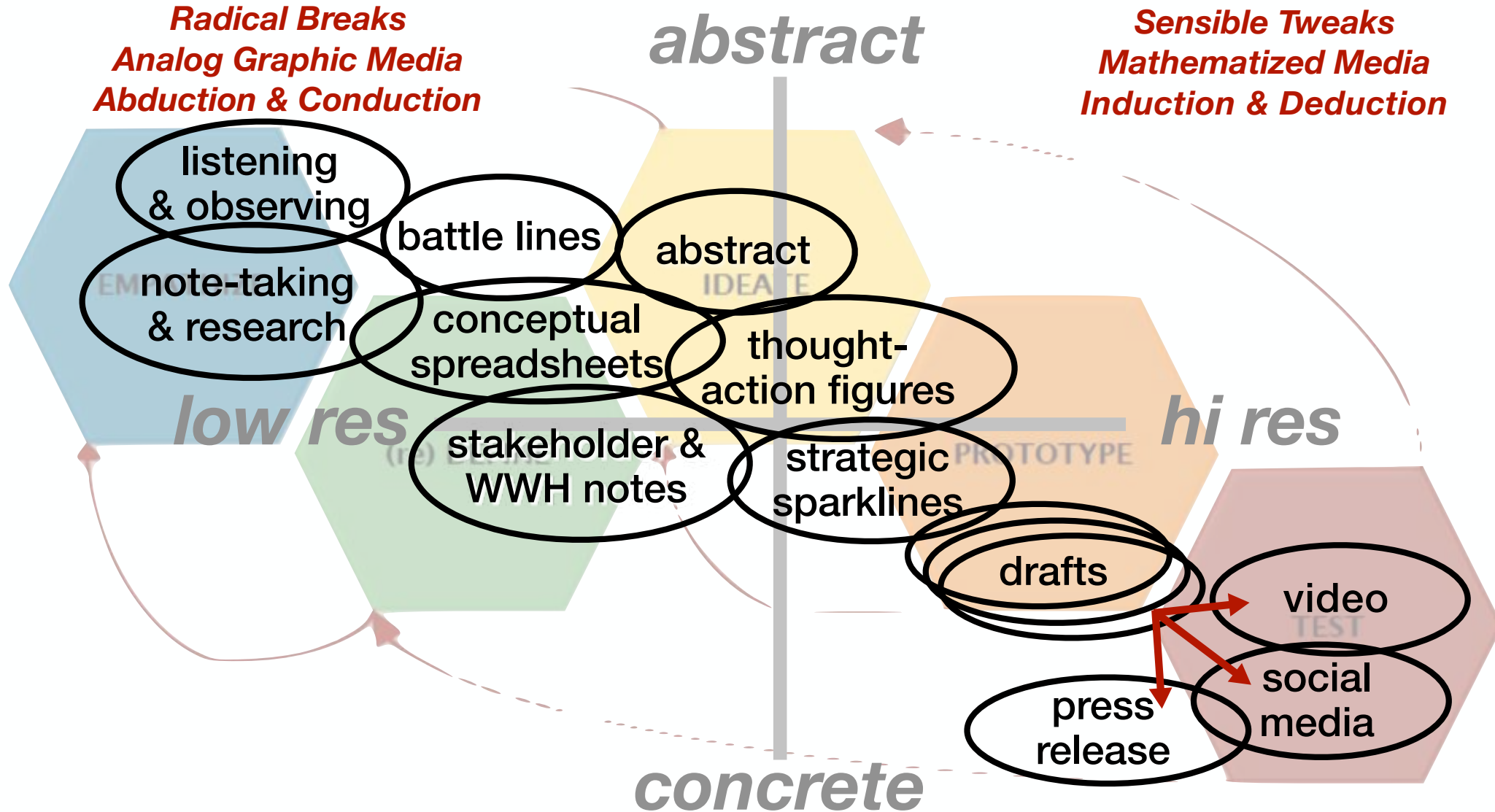
Black Farmer Fund



Transmedia Knowledge



Critical Design Thinking



Efficacy



Effectiveness



Efficiency

Scoping/Research/Ideation

Composing/Drafting/Prototyping

Testing/Tweaking/Delivering

Cosmogram

Ulmer's EPS: Existential Positioning System



- **Clarify Core Interests**
- **Connect Memories and Hopes**
- **Map Important Life Terrains**
- **Identify Value and Power Sources**
- **Model Micro and Macro**
- **Find Guidance for Life**

Cosmogram

The diagram is a 2x2 matrix titled 'Cosmogram'. It is divided into four quadrants by a horizontal and a vertical white line. The quadrants are labeled as follows:

Top Left	Top Right
Popular Culture	School/ Career
Family	Community/ History

**Popular
Culture**

**School/
Career**

Family

**Community/
History**

rock & roll
JIMI HENDRIX
solo + band
counter-culture

LAW & ART
critical thinking
creativity
performance studies

Brother & me
care & competition
expectations
memories

NASA space race
science, exploration
NATION PATRIOTISM
challenger disaster

Cosmogram

Ulmer's EPS: Existential Positioning System

1. Identify a key/enigmatic event in each quadrant*

2. Describe key features or context

3. Note the hopes shaping each quad

4. Explore any tension or paradox

5. Cycle around, zoom in/out, reframe, etc.

6. Look for patterns, flashes of future

*** Feel free to substitute in 'Religion,' 'Street,' etc.**



Design Challenge



Compose a story across your three ecologies